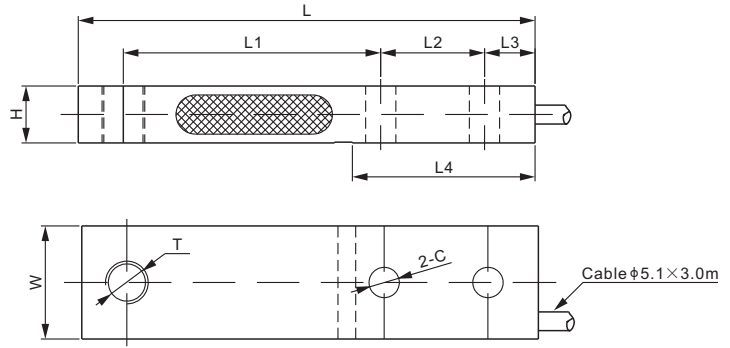


## 563YSBK; 563YSBKUN

### Stainless Steel



SINGLE ENDED BEAMS

CE RoHS

### DIMENSIONS

RATED CAPACITY	C	H	L	L1	L2	L3	L4	W	T
<b>563YSBK:</b>									
kg/mm									
200	13.0	12.7	128.5	76.2	25.4	14.2	54.0	31.8	M12
500	13.0	15.9	128.5	76.2	25.4	14.2	54.0	31.8	M12
1,000	13.0	19.1	128.5	76.2	25.4	14.2	54.0	31.8	M12
2,000	13.0	25.4	128.5	76.2	25.4	14.2	54.0	31.8	M12
<b>lb/inches</b> (conversion of above dimensions)									
441	0.51	0.50	5.06	3.00	1.00	0.56	2.12	1.25	M12
1,102	0.51	0.63	5.06	3.00	1.00	0.56	2.12	1.25	M12
2,205	0.51	0.75	5.06	3.00	1.00	0.56	2.12	1.25	M12
4,409	0.51	1.00	5.06	3.00	1.00	0.56	2.12	1.25	M12
<b>563YSBKUN:</b>									
kg/mm									
200	13.0	12.7	128.5	76.2	25.4	14.2	54.0	31.8	1/2-20 UNF
500	13.0	15.9	128.5	76.2	25.4	14.2	54.0	31.8	1/2-20 UNF
1,000	13.0	19.1	128.5	76.2	25.4	14.2	54.0	31.8	1/2-20 UNF
2,000	13.0	25.4	128.5	76.2	25.4	14.2	54.0	31.8	1/2-20 UNF
<b>lb/inches</b> (conversion of above dimensions)									
441	0.51	0.50	5.06	3.00	1.00	0.56	2.12	1.25	1/2-20 UNF
1,102	0.51	0.63	5.06	3.00	1.00	0.56	2.12	1.25	1/2-20 UNF
2,205	0.51	0.75	5.06	3.00	1.00	0.56	2.12	1.25	1/2-20 UNF
4,409	0.51	1.00	5.06	3.00	1.00	0.56	2.12	1.25	1/2-20 UNF

### SPECIFICATIONS

Full Scale Output	2.0 mV/V ± 0.1%	Recommended Excitation	10V (15V Maximum)
Zero Balance	± 0.02 mV/V	Insulation Resistance	>2 [ 50V DC ] GΩ
Non-linearity	< ± 0.023%	Compensated Temperature Range	-10°C to 50°C / 14°F to 122°F
Repeatability	< ± 0.017%	Safe Overload	150% of full scale
Hysteresis Error	< ± 0.023%	Breaking Overload	300% of full scale
Creep in 30 min.	< ± 0.023%	Seal Type / IP Rating	Environmentally Sealed / IP66
Input Resistance	1100 Ω ± 50	Cable Color Code	Exc+ Red      Exc- Black
Output Resistance	1000 Ω ± 5		Sig+ Green      Sig- White
Element Material	2Cr13 Stainless Steel		Shield Bare

### PART NUMBER

Rated Capacity	Part No.	Weight (kg) Approx.
200kg	563YSBK-200kg-YZ	0.4
	563YSBKUN-200kg-YZ	0.4
500kg	563YSBK-500kg-YZ	0.4
	563YSBKUN-500kg-YZ	0.4
1t	563YSBK-1t-YZ	0.6
	563YSBKUN-1t-YZ	0.6
2t	563YSBK-2t-YZ	0.8
	563YSBKUN-2t-YZ	0.8

### INTERCHANGEABLE PRODUCTS

Manufacturer	Model
Flintec	BK2