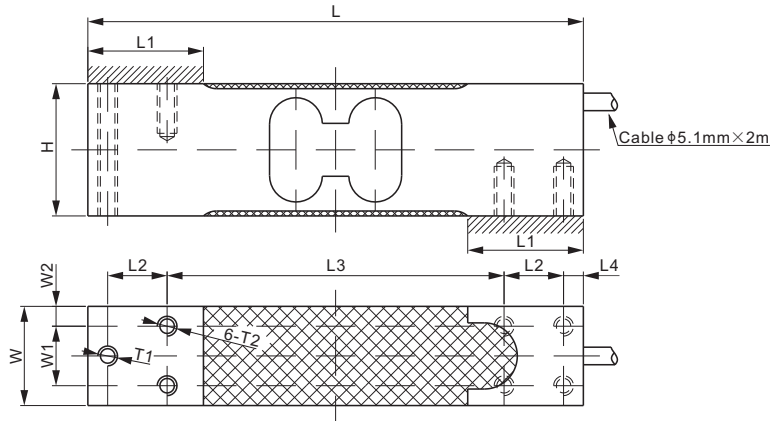
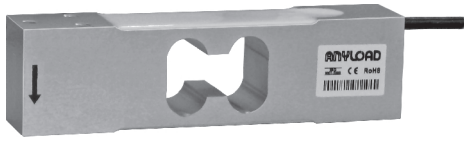


108TAAD



Aluminum



OIML CE RoHS

DIMENSIONS

| RATED CAPACITY | H | L | L1 | L2 | L3 | L4 | W | W1 | W2 | T1 | T2 |
|---|------|-------|------|------|-------|------|------|------|------|----|--------------|
| kg/mm | | | | | | | | | | | |
| 30-150 | 40.0 | 150.0 | 35.0 | 18.0 | 102.0 | 6.0 | 30.0 | 18.0 | 6.0 | M6 | M6 Depth 15 |
| lb/inches (conversion of above dimensions) | | | | | | | | | | | |
| 66-330 | 1.57 | 5.91 | 1.38 | 0.71 | 4.02 | 0.24 | 1.18 | 0.71 | 0.24 | M6 | M6 Depth 0.6 |

SPECIFICATIONS

| | | | |
|-------------------|----------------|------------------------------|-------------------------------|
| Type | YZ108 | Recommended Excitation | 10V (15V Maximum) |
| Full Scale Output | 1.0 mV/V ± 10% | Reference Max. Platform Size | 400 × 400 mm |
| Zero Balance | ± 0.02 mV/V | Insulation Resistance | >2 [50V DC] GΩ |
| Non-linearity | < ± 0.017% | Nominal Temperature Range | -10°C to 40°C / 14°F to 104°F |
| Repeatability | < ± 0.017% | Safe Overload | 150% of full scale |
| Hysteresis Error | < ± 0.017% | Breaking Overload | 300% of full scale |
| Creep in 30 min. | < ± 0.023% | Seal Type / IP Rating | Environmentally Sealed / IP66 |
| Input Resistance | 415Ω ± 15 | Cable Color Code | Exc+ Red Exc- Black |
| Output Resistance | 350Ω ± 3 | | Sig+ Green Sig- White |
| Element Material | Aluminum | | Shield Bare |

PART NUMBER

| Rated Capacity | Part No. | Weight (kg) Approx. |
|----------------|--------------------|---------------------|
| 30kg..... | 108TAAD-30kg..... | 0.5 |
| 60kg..... | 108TAAD-60kg..... | 0.5 |
| 150kg..... | 108TAAD-150kg..... | 0.5 |

INTERCHANGEABLE PRODUCTS

| Manufacturer | Model |
|--------------|---------|
| A&D..... | LC-4102 |



SINGLE POINTS