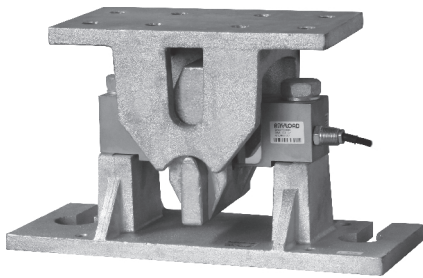


102BHM1

Alloy Steel



Features:

- Assembles: 102BH double ended beam load cell
- Capacities: 10Klb-200Klb/5t-100t
- Center pivoted with self-aligning suspension link design
- Allows for multi-directional movements
- No check rods required

WEIGH MODULES

Load Cell Certifications:

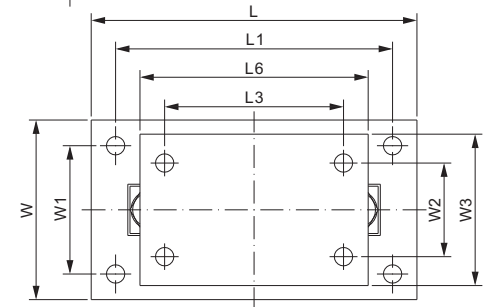
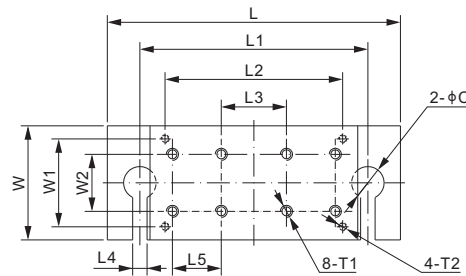
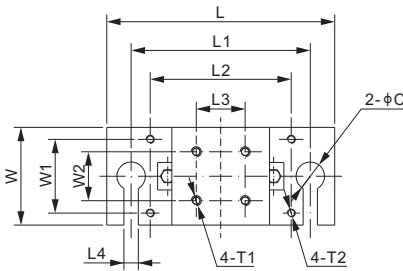
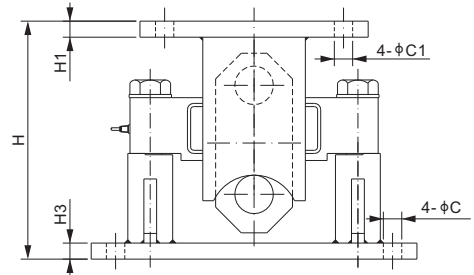
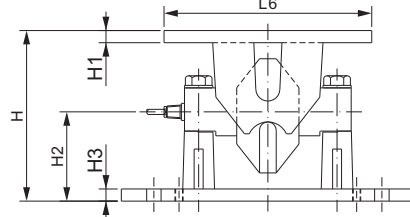
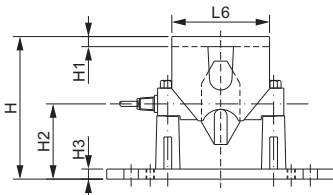


Load Cell Not Included.

Capacity: 10Klb-25Klb (5t-15t)

Capacity: LE40Klb-75Klb (25t-35t)

Capacity: 100Klb-200Klb



DIMENSIONS

LOAD CELL CAPACITY	C	C1	H	H1	H2	H3	L	L1	L2	L3	L4	L5	L6	W	W1	W2	W3	T1	T2
Klb/inches																			
10-25	1.75	-	8.62	0.62	4.45	0.59	14.00	11.00	8.66	3.00	0.87	-	6.00	6.00	4.53	3.00	-	5/8-11UNC-2B	1/2-13 UNC
LE40:50-75	2.00	-	10.47	0.75	5.44	0.75	18.00	14.00	10.91	4.00	0.87	3.00	12.76	7.00	5.39	3.50	-	3/4-10UNC-2B	1/2-13 UNC
100-125	1.13	1.13	14.61	0.98	-	0.98	20.00	17.01	-	10.98	-	-	14.02	11.02	7.87	5.75	9.29	-	-
200	1.34	1.34	19.88	1.57	-	1.57	24.49	21.50	-	14.02	-	-	17.01	15.12	12.01	10.75	15.12	-	-
t/mm																			
5-15	44.5	-	219	15.7	113.1	15.0	355.6	279.4	220.0	76.2	22.5	-	152.4	152.4	115.0	76.2	-	5/8-11UNC-2B	1/2-13 UNC
25-35	50.8	-	266.0	19.0	138.2	19.0	457.2	355.6	277.0	101.6	22.5	76.2	324.0	177.8	137.0	88.9	-	3/4-10UNC-2B	1/2-13 UNC
50	28.6	28.6	371.0	25.0	-	25.0	508.0	432.0	-	279.0	-	-	356.0	280.0	200.0	146.0	236.0	-	-
100	34.0	34.0	505.0	40.0	-	40.0	622.0	546.0	-	356.0	-	-	432.0	384.0	305.0	273.0	384.0	-	-

LE refers to large envelope

PART NUMBER

Load Cell Capacity	Part No.	Weight (kg) Approx.
10Klb-25Klb	102BHM1-(10-25)Klb	21.7
50Klb-75Klb	102BHM1-(50-75)Klb	41.0
100Klb-125Klb	102BHM1-(100-125)Klb	-
200Klb	102BHM1-200Klb	450.0
5t-15t	102BHM1-(5-15)t	21.7
25t-35t	102BHM1-(25-35)t	41.0
50t	102BHM1-50t	-
100t	102BHM1-100t	-

INTERCHANGEABLE PRODUCTS

Manufacturer	Model
Rice Lake	TSA
Vishay Sensortronics	65058-TSA