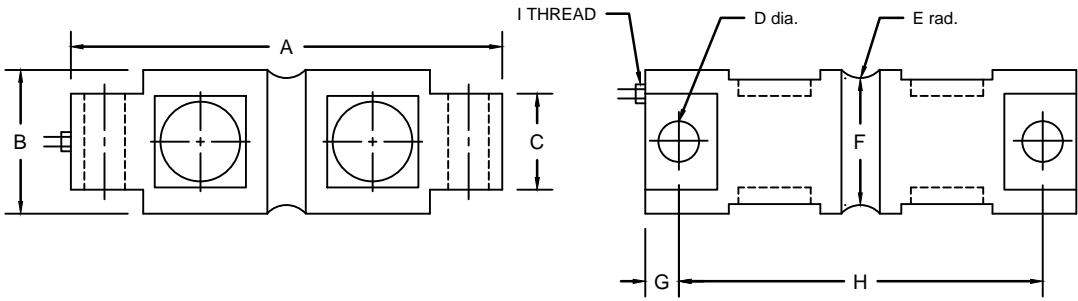


REVISIONS							
ZONE	LTR.	DESCRIPTION	DATE	ECN	BY	CKD	APVD
-	-	INITIAL RELEASE	10/01/08	-	-	-	-
-	C	REDRAWN FOR LABELING CONSISTENCY	01/20/16	2016-11	TB	AB	AA



PERFORMANCE SPECIFICATIONS:

- CAPACITIES: 10K, 20K, 30K, 40K, 50K, 60K, LB
- RATED OUTPUT: 3.00 mV/V \pm 0.1%
- SAFE OVERLOAD: 150% FS
- EXCITATION VOLTAGE: 10-20V AC/DC
- INPUT RESISTANCE: 700 \pm 10 OHMS
- OUTPUT RESISTANCE: 700 \pm 5 OHMS
- ZERO BALANCE: \pm 1.00% FS
- SEAL TYPE: WELDED SEALED
- NON-LINEARITY: \pm 0.03% FS
- HYSTERESIS: \pm 0.02% FS
- REPEATABILITY: \pm 0.01% FS
- CREEP: \pm 0.02% FS
- COMPENSATED TEMPERATURE RANGE: -10°C - +40°C
- TEMPERATURE EFFECT ON ZERO: \pm 0.0027%FS/°C
- TEMPERATURE EFFECT ON OUTPUT: \pm 0.0015%FS/°C
- INSULATION RESISTANCE: >5000 MEGOHMS
- LOAD CELL CABLE: 4 CONDUCTOR, 50 FT BRAIDED SHIELD
- LOAD CELL WIRING:
 GREEN +EXC
 BLACK -EXC
 WHITE +SIG
 RED -SIG
 BRAID/YELLOW: SHIELD
- FM APPROVED

RATED CAPACITY	DIMENSIONS								
	A	B	C	D	E	F	G	H	I
10K	8.12	1.70	1.12	0.66	0.50	1.48	0.62	6.88	1/4-18 NPT
20K	8.12	1.95	1.12	0.66	0.50	1.48	0.62	6.88	1/4-18 NPT
30K-60K	10.25	3.00	2.37	1.06	1.00	2.73	0.88	8.50	1/2-14 NPT

"DO NOT ALTER WITHOUT AGENCY NOTIFICATION"

COTI GLOBAL SENSORS, INC.

CG-5103-SSW DOUBLE ENDED BEAM LOAD CELL

	THIS DRAWING USES THIRD ANGLE PROJECTION	APPROVALS	DATE
	<small>THIS DOCUMENT CONTAINS PROPRIETARY INFORMATION AND SUCH INFORMATION MAY NOT BE REPRODUCED OR DISCLOSED FOR ANY PURPOSE OR USED TO PRODUCE THE ARTICLE OR SUBJECT WITHOUT WRITTEN PERMISSION FROM COTI GLOBAL SENSORS, INC.</small>	DRAWN: MTSI	10/01/08
		CHECKED: MB	10/01/08
		ENGINEER: AA	10/01/08
<small>TOLERANCES UNLESS OTHERWISE SPECIFIED .XX-±.01 .XXX-±.005 FRACTIONS-±1/16" ANGLES: ±1/2°</small>	APPROVED: AA	10/01/08	
	MATERIAL	STAINLESS STEEL	

SCALE	SIZE	PART/DRAWING NO.	REV.
NONE	B	DOD-CG-5103-SSW	C
MODEL CG-5103-SSW			SHEET 1 OF 1