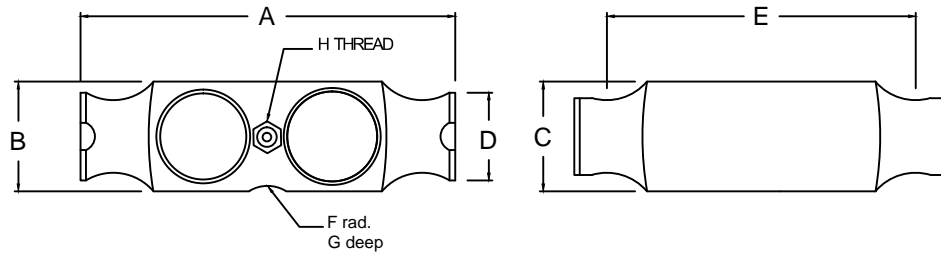


REVISIONS

ZONE	LTR.	DESCRIPTION	DATE	ECN	BY	CKD	APVD
-	-	INITIAL RELEASE	10/01/08	-	-	-	-
-	B	FIXED MEASUREMENT F	7/10/09	-	-	-	-
-	C	REDRAWN FOR LABELING CONSISTENCY	12/15/15	2016-54	TB	AB	AA



PERFORMANCE SPECIFICATIONS:

1. CAPACITIES: 50KSE, 60KSE
2. RATED OUTPUT: 3.00 mV/V $\pm 0.1\%$
3. SAFE OVERLOAD: 150% FS
4. EXCITATION VOLTAGE: 10-20V AC/DC
5. INPUT RESISTANCE: 700 ± 10 OHMS
6. OUTPUT RESISTANCE: 700 ± 5 OHMS
7. ZERO BALANCE: $\pm 1.00\%$ FS
8. SEAL TYPE: ENVIRONMENTALLY SEALED, IP67
9. NON-LINEARITY: $\pm 0.03\%$ FS
10. HYSTERESIS: $\pm 0.02\%$ FS
11. REPEATABILITY: $\pm 0.01\%$ FS
12. CREEP: $\pm 0.02\%$ FS
13. NTEP RATED
14. CLASS 111L 10,000 DIVISION, MULTIPLE CELL
15. COMPENSATED TEMPERATURE RANGE: $-10^{\circ}\text{C} - +40^{\circ}\text{C}$
16. TEMPERATURE EFFECT ON ZERO: $\pm 0.0027\%$ FS/ $^{\circ}\text{C}$
17. TEMPERATURE EFFECT ON OUTPUT: $\pm 0.0015\%$ FS/ $^{\circ}\text{C}$
18. INSULATION RESISTANCE: >5000 MEGOHMS
19. LOAD CELL CABLE: 4 CONDUCTOR, 50 FT BRAIDED SHIELD
20. LOAD CELL WIRING:
 - GREEN +EXC
 - BLACK -EXC
 - WHITE +SIG
 - RED -SIG
 - BRAID/YELLOW: SHEILD
21. FM APPROVED

RATED CAPACITY	DIMENSIONS							
	A	B	C	D	E	F	G	I
50Kse-60Kse	8.25	2.45	1.94	2.00	7.25	0.50	0.07	1/2-14 NPT

"DO NOT ALTER WITHOUT AGENCY NOTIFICATION"

COTI GLOBAL SENSORS, INC.

CG-80210
NTEP LOAD CELL

APPROVALS		DATE	SCALE	SIZE	PART/DRAWING NO.	REV.
DRAWN:	MTSI	10/01/08				
CHECKED:	MB	10/01/08				
ENGINEER:	AA	10/01/08				
APPROVED:	AA	10/01/08				
MATERIAL						
ALLOY STEEL						
THIS DOCUMENT CONTAINS PROPRIETARY INFORMATION AND SUCH INFORMATION MAY NOT BE REPRODUCED OR DISCLOSED FOR ANY PURPOSE OR USED TO PRODUCE THE ARTICLE OR SUBJECT WITHOUT WRITTEN PERMISSION FROM COTI GLOBAL SENSORS, INC.			TOLERANCES UNLESS OTHERWISE SPECIFIED .XX- ± 0.01 .XXX- ± 0.005 FRACTIONS- $\pm 1/16"$ ANGLES: $\pm 1/2'$			
THIS DRAWING USES THIRD ANGLE PROJECTION			MODEL CG-80210 SHEET 1 OF 1			