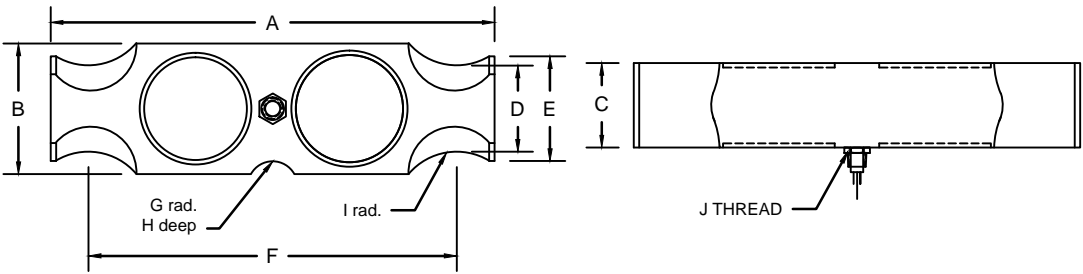


REVISIONS							
ZONE	LTR.	DESCRIPTION	DATE	ECN	BY	CKD	APVD
-	-	INITIAL RELEASE	10/01/08	-	-	-	-
-	B	EDIT DIMENSION TABLE	9/14/09	-	-	-	-
-	D	REDRAWN FOR LABELING CONSISTENCY	11/10/15	2016-44	TB	AB	AA



PERFORMANCE SPECIFICATIONS:

1. CAPACITIES: 50K, 65K, & 100K LB
2. RATED OUTPUT: 3.00 mV/V $\pm 0.1\%$
3. SAFE OVERLOAD: 150% FS
4. EXCITATION VOLTAGE: 10-20V AC/DC
5. INPUT RESISTANCE: 700 ± 10 OHMS
6. OUTPUT RESISTANCE: 700 ± 5 OHMS
7. ZERO BALANCE: $\pm 1.00\%$ FS
8. SEAL TYPE: ENVIRONMENTALLY SEALED, IP67
9. NON-LINEARITY: $\pm 0.03\%$ FS
10. HYSTERESIS: $\pm 0.02\%$ FS
11. REPEATABILITY: $\pm 0.01\%$ FS
12. CREEP: $\pm 0.02\%$ FS
13. NTEP RATED
14. CLASS 111L 10,000 DIVISION, MULTIPLE CELL
15. COMPENSATED TEMPERATURE RANGE: $-10^{\circ}\text{C} - +40^{\circ}\text{C}$
16. TEMPERATURE EFFECT ON ZERO: $\pm 0.0027\%$ FS/ $^{\circ}\text{C}$
17. TEMPERATURE EFFECT ON OUTPUT: $\pm 0.0015\%$ FS/ $^{\circ}\text{C}$
18. INSULATION RESISTANCE: >5000 MEGOHMS
19. LOAD CELL CABLE: 4 CONDUCTOR, 50 FT BRAIDED SHIELD
20. LOAD CELL WIRING:
 - GREEN +EXC
 - BLACK -EXC
 - WHITE +SIG
 - RED -SIG
 - BRAID/YELLOW: SHIELD
21. FM APPROVED

RATED CAPACITY	DIMENSIONS									
	A	B	C	D	E	F	G	H	I	J
50K-100K	10.25	3.00	1.94	2.06	2.40	8.50	1.00	.311	1.00	1/2-14 NPT

"DO NOT ALTER WITHOUT AGENCY NOTIFICATION"

COTI GLOBAL SENSORS, INC.

CG-BLC-2 DOUBLE ENDED BEAM
NTEP LOAD CELL

THIS DRAWING USES THIRD ANGLE PROJECTION THIS DOCUMENT CONTAINS PROPRIETARY INFORMATION AND SUCH INFORMATION MAY NOT BE REPRODUCED OR DISCLOSED FOR ANY PURPOSE OR USED TO PRODUCE THE ARTICLE OR SUBJECT WITHOUT WRITTEN PERMISSION FROM COTI GLOBAL SENSORS, INC. TOLERANCES UNLESS OTHERWISE SPECIFIED .XX ± 0.01 .XXX ± 0.005 FRACTIONS $\pm 1/16"$ ANGLES: $\pm 1/2^{\circ}$	APPROVALS		DATE
	DRAWN: DH		9/14/09
	CHECKED: MB		9/14/09
	ENGINEER: DH		9/14/09
APPROVED: AA		9/14/09	
MATERIAL	ALLOY STEEL		

SCALE	SIZE	PART/DRAWING NO.	REV.
NONE	B	DOD-CG-BLC-2	D
MODEL	CG-BLC-2		SHEET 1 OF 1