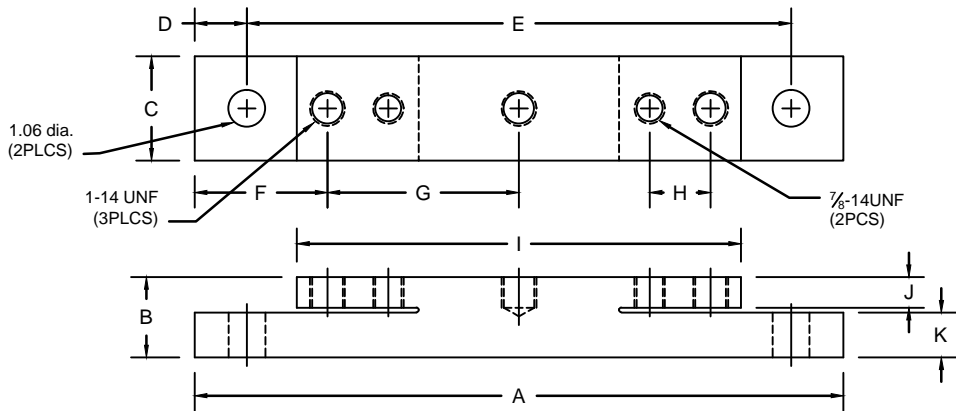


REVISIONS							
ZONE	LTR.	DESCRIPTION	DATE	ECN	BY	CKD	APVD
-	-	INITIAL RELEASE	10/01/08	-	-	-	-
-	C	REDRAWN FOR LABELING CONSISTENCY	12/15/15	2016-25	TB	AB	AA



PERFORMANCE SPECIFICATIONS:

- CAPACITIES: 12.5K LB
 - RATED OUTPUT: 0.50 mV/V \pm 0.1%
 - SAFE OVERLOAD: 150% FS
 - EXCITATION VOLTAGE: 10-20V AC/DC
 - INPUT RESISTANCE: 700 \pm 10 OHMS
 - OUTPUT RESISTANCE: 700 \pm 5 OHMS
 - ZERO BALANCE: \pm 1.00% FS
 - SEAL TYPE: WELDED SEALED
 - NON-LINEARITY: \pm 0.03% FS
 - HYSTERESIS: \pm 0.02% FS
 - REPEATABILITY: \pm 0.01% FS
 - CREEP: \pm 0.02% FS
 - COMPENSATED TEMPERATURE RANGE: -10°C - +40°C
 - TEMPERATURE EFFECT ON ZERO: \pm 0.0027%FS/°C
 - TEMPERATURE EFFECT ON OUTPUT: \pm 0.0015%FS/°C
 - INSULATION RESISTANCE: >5000 MEGOHMS
18. LOAD CELL CONNECTOR:
7 PIN MALE AMPHENOL CONNECTOR
- PIN D - POSITIVE EXCITATION
 - PIN C - NEGATIVE EXCITATION
 - PIN A - POSITIVE SIGNAL
 - PIN F - NEGATIVE SIGNAL
 - PIN B - OPEN
 - PIN E - OPEN
19. 4 CONDUCTOR, 80 FT (BRAIDED SHIELD)
- GREEN +EXC
 - BLACK -EXC
 - WHITE +SIG
 - RED -SIG
 - BRAID/YELLOW: SHIELD
19. FM APPROVED

RATED CAPACITY	DIMENSIONS										
	A	B	C	D	E	F	G	H	I	J	K
12.5K	22.62	2.31	3.00	1.50	19.62	3.81	7.50	1.75	16.75	0.88	1.29

"DO NOT ALTER WITHOUT AGENCY NOTIFICATION"

COTI GLOBAL SENSORS, INC.

**CG-LODEC-DOUBLE ENDED BEAM
LOAD CELL**

SCALE	SIZE	PART/DRAWING NO.	REV.
NONE	B	DOD-CG-LODEC	C
MODEL	CG-LODEC	SHEET 1 OF 1	

	THIS DRAWING USES THIRD ANGLE PROJECTION	APPROVALS DRAWN: MTSI 10/01/08 CHECKED: MB 10/01/08 ENGINEER: AA 10/01/08 APPROVED: AA 10/01/08	DATE	
	THIS DOCUMENT CONTAINS PROPRIETARY INFORMATION AND SUCH INFORMATION MAY NOT BE REPRODUCED OR DISCLOSED FOR ANY PURPOSE OR USED TO PRODUCE THE ARTICLE OR SUBJECT WITHOUT WRITTEN PERMISSION FROM COTI GLOBAL SENSORS, INC.	TOLERANCES UNLESS OTHERWISE SPECIFIED .XX-±.01 .XXX-±.005 FRACTIONS-±1/16" ANGLES: ±1/2°	MATERIAL ALLOY STEEL	