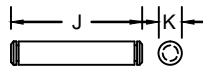
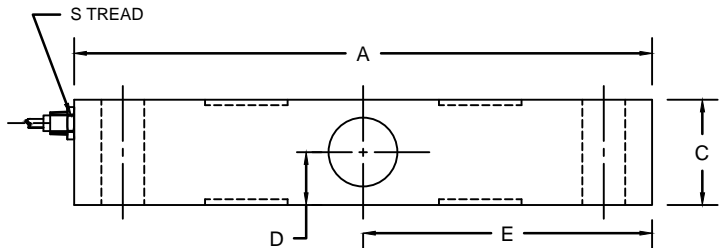
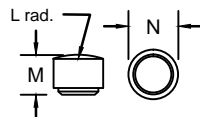


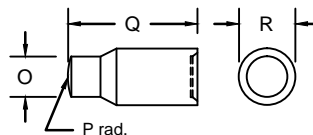
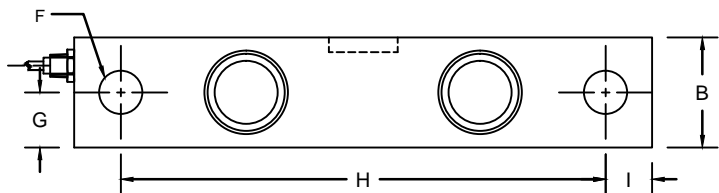
REVISIONS							
ZONE	LTR.	DESCRIPTION	DATE	ECN	BY	CKD	APVD
-	-	INITIAL RELEASE	10/01/08	-	-	-	-
-	D	REDRAWN FOR LABELING CONSISTENCY	12/15/15	2016-27	TB	AB	AA
-	E	UPDATED DIMENSION K	06/07/16	2016-79	TB	AB	AA



600 SUPPORT PIN



606 LOAD BUTTON



607 ROCKER PIN

**PERFORMANCE SPECIFICATIONS:**

- CAPACITIES: 50K LB
- RATED OUTPUT: 3.00 mV/V  $\pm$ 0.1%
- SAFE OVERLOAD: 150% FS
- EXCITATION VOLTAGE: 10-20V AC/DC
- INPUT RESISTANCE: 700  $\pm$  10 OHMS
- OUTPUT RESISTANCE: 700  $\pm$  5 OHMS
- ZERO BALANCE:  $\pm$ 1.00% FS
- SEAL TYPE: WELDED SEALED
- NON-LINEARITY:  $\pm$ 0.03% FS
- HYSTERESIS:  $\pm$ 0.02% FS
- REPEATABILITY:  $\pm$ 0.01% FS
- CREEP:  $\pm$ 0.02% FS
- COMPENSATED TEMPERATURE RANGE: -10°C - +40°C
- TEMPERATURE EFFECT ON ZERO:  $\pm$ 0.0027%/FS/°C
- TEMPERATURE EFFECT ON OUTPUT:  $\pm$ 0.0015%/FS/°C
- INSULATION RESISTANCE: >5000 MEGOHMS
- LOAD CELL CABLE: 4 CONDUCTOR, 60 FT BRAIDED SHIELD
- LOAD CELL WIRING:
  - GREEN +EXC
  - BLACK -EXC
  - WHITE +SIG
  - RED -SIG
  - BRAID/YELLOW: SHIELD
- FM APPROVED

RATED CAPACITY	DIMENSIONS																			
	A	B	C	D	E	F	G	H	I	J	K	L	M	N	O	P	Q	R	S	
50K	10.50	2.44	1.94	0.97	5.25	0.78	1.22	8.75	0.88	-	-	-	-	-	-	-	-	-	-	1/2-14 NPT
#600 Support Pin	-	-	-	-	-	-	-	-	-	4.25	0.75	-	-	-	-	-	-	-	-	-
#606 Load Button	-	-	-	-	-	-	-	-	-	-	-	8.00	1.00	1.25	-	-	-	-	-	-
#607 Rocker Pin	-	-	-	-	-	-	-	-	-	-	-	-	-	-	1.25	8.00	4.00	1.75	-	-

"DO NOT ALTER WITHOUT AGENCY NOTIFICATION"

COTI GLOBAL SENSORS, INC.

CG-STR1-SSW DOUBLE ENDED BEAM LOAD CELL

<p>THIS DRAWING USES THIRD ANGLE PROJECTION</p>	<p>APPROVALS</p> <p>DRAWN: MTSI 10/01/08</p> <p>CHECKED: MB 10/01/08</p> <p>ENGINEER: AA 10/01/08</p> <p>APPROVED: AA 10/01/08</p>	<p>DATE</p>	<p>SCALE</p> <p>NONE B</p>		<p>REV.</p> <p>E</p>
			<p>SIZE</p> <p>B</p>		
			<p>PART/DRAWING NO.</p> <p>DOD-CG-STR1-SSW</p>		
			<p>MODEL</p> <p>CG-STR1-SSW</p>		
<p>MATERIAL</p> <p>STAINLESS STEEL</p>		<p>SHEET</p> <p>1 OF 1</p>			

THIS DOCUMENT CONTAINS PROPRIETARY INFORMATION AND SUCH INFORMATION MAY NOT BE REPRODUCED OR DISCLOSED FOR ANY PURPOSE OR USED TO PRODUCE THE ARTICLE OR SUBJECT WITHOUT WRITTEN PERMISSION FROM COTI GLOBAL SENSORS, INC.

TOLERANCES UNLESS OTHERWISE SPECIFIED  
 .XX- $\pm$ 0.01  
 .XXX- $\pm$ 0.005  
 FRACTIONS- $\pm$ 1/16"  
 ANGLES:  $\pm$ 1/2°

