

Rice Lake RL82021 Stainless Steel, Rocker Column Load Cell



*As of: Monday, August 25,
2025*

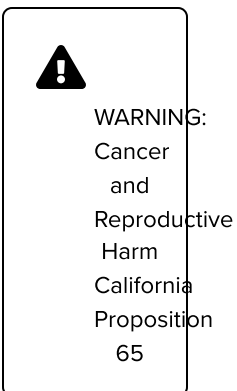


Standard Features

The RL82021 is a stainless steel, hermetically sealed rock-style load cell. It features built-in lightning protection and stainless overbraid cable. It is available in 30 and 40 t capacities with 18 m of cable.

Approvals





RL82021 Load Cell Specifications

Full Scale Output:

2.0 mV/V

Output Resistance:1,005 (± 5) ohm**Input Resistance:**1,150 (± 50) ohm**Material/Finish:**

Stainless steel

Temperature:

Compensated:

14 °F to 104 °F (-10 °C to 40 °C)

Operating:

0 °F to 150 °F (-18 °C to 65 °C)

Seal Type:

Hermetically sealer, IP69K

Safe Overload:

120% full scale

Rated Excitation:

5 to 10 VDC

Combined Error:

0.013% full scale

Non-repeatability:

0.01% full scale

Insulation Resistance:

5,000 megohm

Deflection at Capacity:

0.621 mm

Cable Length:

18 m overbraid cable

Cable Color Code:

Green +Excitation

Black –Excitation

Red +Signal

White –Signal

Blue +Sense

Yellow -Sense

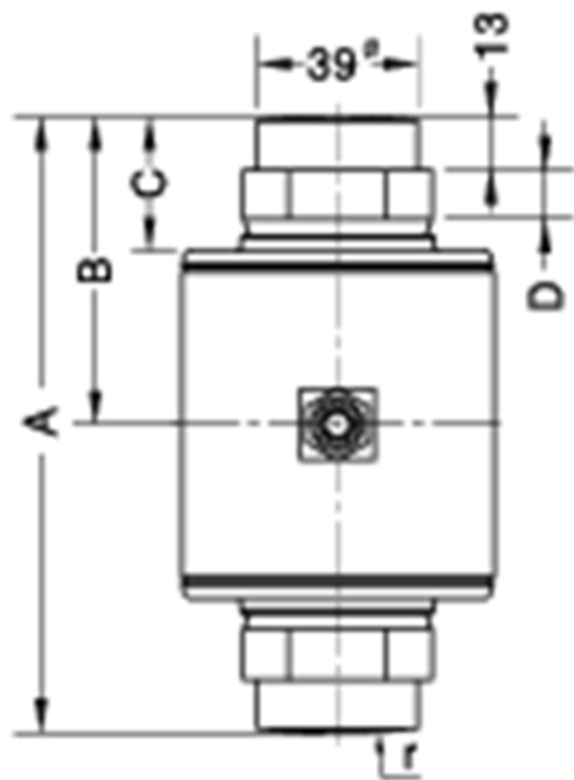
Warranty:

Two-year limited

Approvals:

NTEP

RL82021 Load Cell Dimensions



Rated Capacity	A	B	C	D	Ball r
lb/in					
30,000	5.51	2.76	1.10	0.28	7.09
40,000	5.91	2.95	1.30	0.47	7.87

Parts

Part #	Description
221271	Load Cell, CSR RL82021-30 30t 18m over braid 6 cond 2 mv/v 1000 Ohm NTEP IIIL 10M SST IP69 Surge Protection
207495	Load Cell,CSR RL82021-40t 40t 18m over braid 6 cond 2mv/v 1000 Ohm NTEP IIIL 10M SST IP69K Surge Protection

Options

Part # Description

Load Cup Kits

223356	Load Cup Kit for RL82021 30t capacity load cell. Kit includes upper and lower cups, o-ring washers and bolts. Zinc plated alloy steel
223357	Load Cup Kit for RL82021 40t capacity load cell. Kit includes upper and lower cups, o-ring washers and bolts. Zinc plated alloy steel

www.ricelake.com | 800-472-6703

An ISO 9001 Registered Company ©2024 Rice Lake Weighing Systems