

EZ Mount 1 HE

Stainless Steel Weigh Modules, Hermetically Sealed, Rice Lake Weighing Systems



Available in configurations with three or four mounting assemblies.
Picture is a representation of actual product.

The EZ Mount 1 HE Series weigh modules utilize the double-ended beam design with an articulating top plate to provide superior accuracy in any loading condition. The double-ended beam design means there is less cumbersome hardware and each module has a lower profile than modules of different configurations. The RL72010 MH Series load cells give you accuracy and dependability in any environment. Their stainless steel, hermetically sealed design also make them the ideal solution in harsh environments where moisture is present.



Module with RL72010MH double-ended shear beam load cell.

Standard Features

- Capacities (per module): 5,000 lb-60,000 lb (2,268 kg-27,216.0 kg)
- Unique sliding pin design compensates for thermal expansion/contraction
- Self-checking
- Easy load cell replacement
- Simplified design allows bolting directly to tank and floor
- Center-loaded, double-ended shear beam design
- Low-profile design
- 304 stainless steel construction

Applications

- Medium- to heavy-capacity tank and hopper weighing applications

Complete Kit Includes

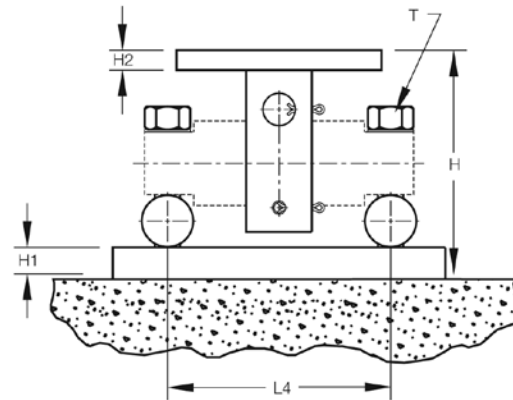
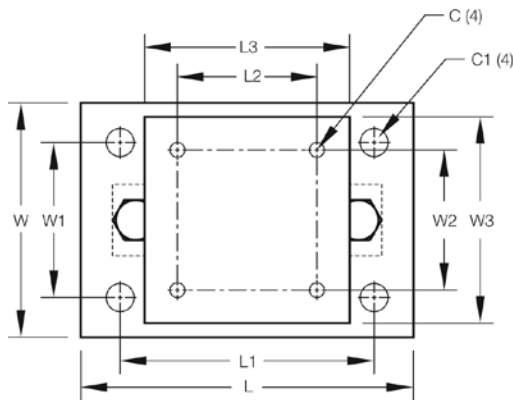
- One JB4SS NEMA Type 4X stainless steel signal trim junction box
- Three or four EZ Mount 1 stainless steel compression mounts
- Three or four RL72010 MH hermetically sealed stainless steel, double-ended shear beam load cells
- 25 ft of our hostile environment EL147HE SURVIVOR® load cell cable

Load Cell Certifications



EZ Mount 1 HE

Stainless Steel Weigh Modules, Hermetically Sealed, Rice Lake Weighing Systems

**Dimensions**

Rated Capacity	C	C1	H	H1	H2	L	L1	L2	L3	L4	T	W	W1	W2	W3
lb/in															
5,000-20,000	0.56	1.06	5.31	0.75	0.50	11.00	8.00	3.00	6.00	6.87	5/8-18 UNF	7.50	4.00	3.00	6.00
30,000-60,000	0.68	1.19	8.43	1.00	0.75	15.00	11.50	5.12	8.00	8.50	1-14 UNS	10.00	6.00	5.12	8.00
kg/mm															
2,268.0-9,071.9	14.2	26.9	134.9	19.1	12.7	279.4	203.2	76.2	152.4	174.5	5/8-18 UNF	190.5	101.6	76.2	152.4
13,607.8-27,215.5	17.3	30.2	214.1	25.4	19.1	381.0	292.1	130.0	203.2	215.9	1-14 UNS	254.0	152.4	130.1	203.2

NOTES: Mounting bolts (T) may project on lower side of base plate. Foundation plate not included

Order Information

Load Rating (Per Module)	Part #	Price
3-Module Kit		
5,000 lb	2,268.0 kg	46695
10,000 lb	4,535.9 kg	46696
20,000 lb	9,071.9 kg	46697
30,000 lb	13,607.8 kg	46698
40,000 lb	18,143.7 kg	46699
50,000 lb	22,679.6 kg	46700
60,000 lb	27,215.5 kg	46701
4-Module Kit		
5,000 lb	2,268.0 kg	46702
10,000 lb	4,535.9 kg	46703
20,000 lb	9,071.9 kg	46704
30,000 lb	13,607.8 kg	46705
40,000 lb	18,143.7 kg	46706
50,000 lb	22,679.6 kg	46707
60,000 lb	27,215.5 kg	46708
Dummy Load Cells (Mild Steel)		
5,000 lb-20,000 lb	2,268.0 kg-9,071.9 kg	33749
30,000 lb-60,000 lb	13,607.8 kg-27,215.5 kg	74016
Grounding Kit		
5,000 lb-60,000 lb		126419

Includes ground strap and mounting hardware

Please contact factory for pricing and availability

Shims

Part #	Price
5,000 lb–20,000 lb, Stainless Steel	
0.0625 in	150886
0.125 in	150888
0.250 in	150889
30,000 lb–60,000 lb, Stainless Steel	
0.0625 in	150890
0.125 in	150891
0.250 in	150892
100,000 lb–150,000 lb, Stainless Steel	
0.0625 in	150893
0.125 in	150894
0.250 in	150896
5,000 lb–20,000 lb, Mild Steel	
0.0625 in	150874
0.125 in	150876
0.250 in	150877
30,000 lb–60,000 lb, Mild Steel	
0.0625 in	150878
0.125 in	150880
0.250 in	150881
100,000 lb–150,000 lb, Mild Steel	
0.0625 in	150882
0.125 in	150884
0.250 in	150885