

WEIGH MODULES

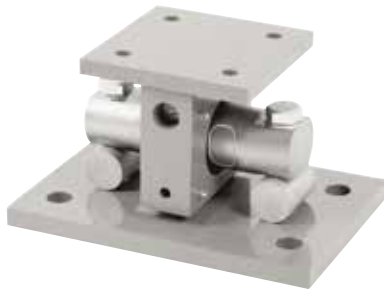
EZ Mount 1 SS

Stainless Steel Weigh Modules, Rice Lake Weighing Systems



Available in configurations with three or four mounting assemblies.
Picture is a representation of actual product.

The EZ Mount 1 Series weigh module utilizes the double-ended beam design with an articulating top plate to provide superior accuracy in any loading condition. The double-ended beam design means there is less cumbersome hardware and each module has a lower profile than modules of different configurations. FM approved RL70000 SS Series load cells give you accuracy and dependability in many applications, including intrinsically safe and explosion proof areas.



Module with RL70000 SS double-ended shear beam load cell.

Standard Features

- Capacities (per module): 5,000 lb-150,000 lb (2,268 kg-60,039.0 kg)
- Unique sliding pin design compensates for thermal expansion/contraction
- NTEP Certified load cells (10,000 lb-100,000 lb)
- Self-checking
- Easy load cell replacement
- Simplified design allows bolting directly to tank and floor
- Center-loaded, double-ended shear beam design
- Low-profile design
- 304 stainless steel construction

Optional Features

- Kits available with VPG-Revere 9103 load cell, capacities in 5,000 lb-150,000 lb (2268.0 kg-68,039.0 kg)

Applications

- Medium to heavy-capacity tank and hopper weighing applications

Complete Kit Includes

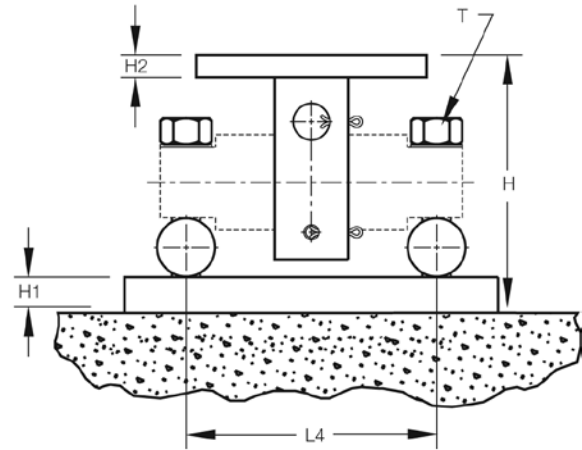
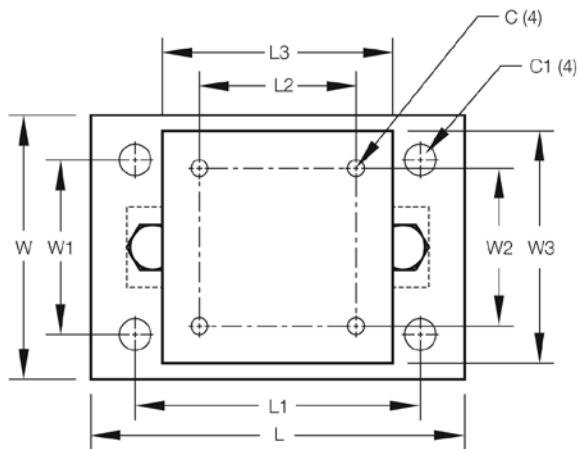
- One JB4SS NEMA Type 4X stainless steel signal trim junction box
- Three or four EZ Mount 1 stainless steel compression mounts
- Three or four RL70000 SS stainless steel double-ended shear beam load cells
- 25 ft of our hostile environment EL147HE SURVIVOR® load cell cable

Load Cell Certifications

NTEP Excluding
5K and 150K

EZ Mount 1 SS

Stainless Steel Weigh Modules, Rice Lake Weighing Systems

**Dimensions**

Rated Capacity	C	C1	H	H1	H2	L	L1	L2	L3	L4	T	W	W1	W2	W3
lb/in															
5,000-20,000	0.56	1.06	5.31	0.75	0.50	11.00	8.00	3.00	6.00	6.87	5/8-18 UNF	7.50	4.00	3.00	6.00
30,000-60,000	0.68	1.19	8.43	1.00	0.75	15.00	11.50	5.12	8.00	8.50	1-14 UNS	10.00	6.00	5.12	8.00
100,000	0.81	1.38	10.37	1.25	1.25	18.00	14.00	7.50	10.00	9.50	1-14 UNS	12.00	9.00	7.50	10.00
150,000	0.81	1.38	10.37	1.25	1.25	18.00	14.00	7.50	10.00	9.50	1-14 UNS	12.00	9.00	7.50	10.00
kg/mm															
2,268.0-9,071.9	14.2	26.9	134.9	19.1	12.7	279.4	203.2	76.2	152.4	174.5	5/8-18 UNF	190.5	101.6	76.2	152.4
13,607.8-27,215.5	17.3	30.2	214.1	25.4	19.1	381.0	292.1	130.0	203.2	215.9	1-14 UNS	254.0	152.4	130.1	203.2
45,359.2	20.6	35.1	263.4	31.8	31.8	457.2	355.6	190.5	254.0	241.3	1-14 UNS	304.8	228.6	190.5	254.0
68,039.0	20.6	35.1	263.4	31.8	31.8	457.2	355.6	190.5	254.0	241.3	1-14 UNS	304.8	228.6	190.5	254.0

Order Information

Load Rating (Per Module)	Part#	Price
Single Module (Does NOT Include Load Cell)		
5,000 lb-20,000 lb	2,268.0 kg-9,071.9 kg	17943 Consult
30,000 lb-60,000 lb	13,607.8 kg-27,215.5 kg	17944 Consult
100,000 lb	45,359.2 kg	17945 Consult
150,000 lb	68,039.0 kg	29011 Consult
3-Module Kit		
5,000 lb*	2,268.0 kg	36195 Consult
10,000 lb	4,535.9 kg	36196 Consult
20,000 lb	9,071.9 kg	36197 Consult
30,000 lb	13,607.8 kg	36198 Consult
40,000 lb	18,143.7 kg	36199 Consult
50,000 lb	22,679.6 kg	36200 Consult
60,000 lb	27,215.5 kg	36201 Consult
100,000 lb**	45,359.2 kg	36202 Consult
150,000 lb*	68,039.0 kg	43288 Consult

* Non-NTEP Certified

**Load cell bolts protrude from bottom of base plate 0.25 in

Order Information

Load Rating (Per Module)	Part#	Price
4-Module Kit		
5,000 lb*	2,268.0 kg	36203 Consult
10,000 lb	4,535.9 kg	36204 Consult
20,000 lb	9,071.9 kg	36205 Consult
30,000 lb	13,607.8 kg	36206 Consult
40,000 lb	18,143.7 kg	36207 Consult
50,000 lb	22,679.6 kg	36208 Consult
60,000 lb	27,215.5 kg	36209 Consult
100,000 lb**	45,359.2 kg	36210 Consult
150,000 lb*	68,039.0 kg	43289 Consult
Dummy Load Cells (Mild Steel)		
5,000 lb-20,000 lb	—	33749 Consult
30,000 lb-60,000 lb	—	74016 Consult
100,000 lb	—	94175 Consult
150,000 lb	—	158715 Consult
Grounding Kit		
5,000 lb-60,000 lb	—	126419 Consult

Includes ground strap and mounting hardware per mount