

## RL1855 HE-HS

Medium-capacity Weigh Modules with Hermetically Sealed Load Cells



*Picture is a representation of actual product.*

The RL1855 HE-HS with module kit has all the features of the RL1855 HE kit but uses the upgraded RL32218S-HE hermetically sealed IP69K load cell.

### Complete Kit Includes

- One JB4SS NEMA Type 4X stainless steel signal trim junction box
- Three or four RL1855 HE stainless steel mounts
- Three or four RL32218S-HE hermetically sealed NTEP Certified load cells
- 25 ft of hostile environment EL147HE SURVIVOR® load cell cable

### Standard Features

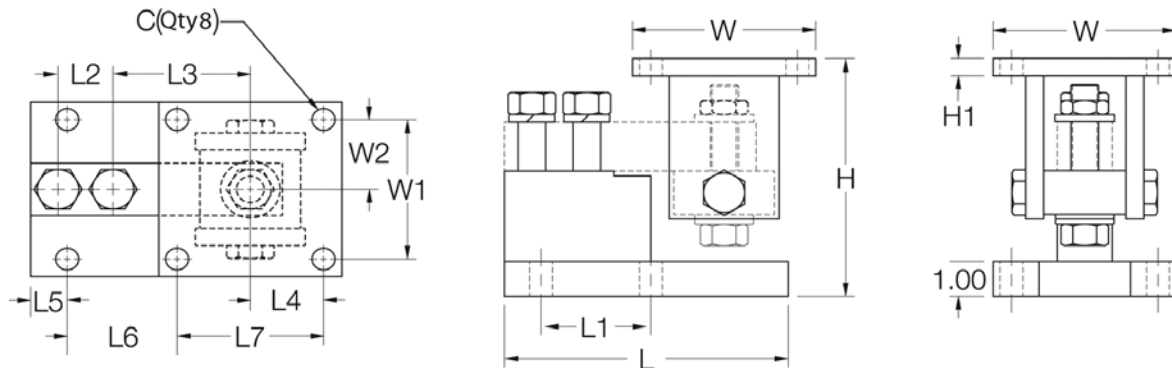
- All stainless steel construction
- Hermetically sealed, stainless steel IP69K
- NTEP Certified load cells, 5,000 d Class III multiple load cell
- Self-checking design with lift off/tip off protection
- Two-year limited warranty

### Applications

- Medium capacity hoppers, bins and tanks
- Batching/blending

### Load Cell Certifications





### Dimensions

Rated Capacity	C	H min/max	H1	L	L1	L2	L3	L4	L5	L6	L7	W	W1	W2
<b>lb/in</b>														
1,000-4,000	0.62	5.25/5.56	0.50	6.00	2.00	1.00	3.00	2.00	0.68	1.94	4.00	5.00	4.00	2.00
5,000-10,000	0.62	6.12/6.62	0.50	7.75	3.00	1.50	3.75	2.00	1.03	2.97	4.00	5.00	4.00	2.00
<b>kg/mm</b>														
453.6-1,814.4	15.8	133.4/141.2	12.7	152.4	50.8	25.4	76.2	50.8	17.3	49.3	101.6	127.0	101.6	50.8
2,268.0-4,535.9	15.8	155.4/168.1	12.7	196.9	76.2	38.1	95.3	50.8	26.2	75.4	101.6	127.0	101.6	50.8

### Order Information

Load Rating (Per Module)		Part #	Price
<b>Single Modules (Includes Load Cell)</b>			
1,000 lb	453.6 kg	<b>170857</b>	Consult
2,500 lb	1,134.0 kg	<b>170858</b>	Consult
4,000 lb	1,814.4 kg	<b>170859</b>	Consult
5,000 lb	2,268.0 kg	<b>170860</b>	Consult
10,000 lb	4,535.9 kg	<b>170861</b>	Consult
<b>3-Module Kit</b>			
1,000 lb	453.6 kg	<b>170862</b>	Consult
2,500 lb	1,134.0 kg	<b>170863</b>	Consult
4,000 lb	1,814.4 kg	<b>170864</b>	Consult
5,000 lb	2,268.0 kg	<b>170865</b>	Consult
10,000 lb	4,535.9 kg	<b>170866</b>	Consult
<b>4-Module Kit</b>			
1,000 lb	453.6 kg	<b>170867</b>	Consult
2,500 lb	1,134.0 kg	<b>170868</b>	Consult
4,000 lb	1,814.4 kg	<b>170869</b>	Consult
5,000 lb	2,268.0 kg	<b>170870</b>	Consult
10,000 lb	4,535.9 kg	<b>170871</b>	Consult