

RL1600 Series

Mild Steel Weigh Modules

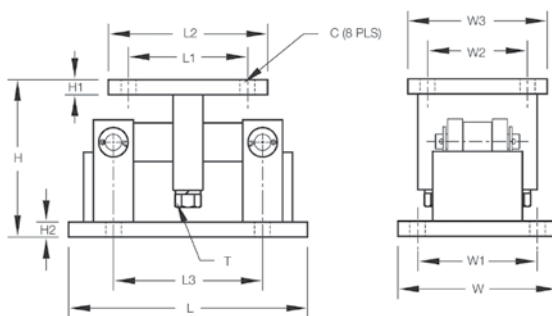


Available in configurations with three or four mounting assemblies.
Picture is a representation of actual product.

The RL1600 Series mounting module kit utilizes several Rice Lake Weighing Systems components to provide an unmatched level of performance in tank and hopper weighing applications. The RL1600 Series kit is ideally suited for indoor and outdoor process control operations in the medium- to high-capacity ranges. Each module incorporates self-checking capabilities for thermal expansion and contraction.



Mild steel module with RL75016 double-ended beam load cell.



Dimensions

Rated Capacity	C	H	H1	H2	L	L1	L2	L3	T	W	W1	W2	W3
lb/in													
1,000-5,000	0.56	5.00	0.50	0.50	9.25	2.75	4.00	6.25	1/2-13 UNC	5.00	3.75	2.75	4.00
10,000-25,000	0.78	7.87	0.75	0.75	12.00	6.00	8.00	7.50	3/4-10 UNC	8.00	6.00	6.00	8.00
50,000-75,000	0.78	9.25	1.00	1.00	16.25	6.50	9.00	11.50	1 1/4-7 UNC	12.00	9.50	6.50	9.00
kg/mm													
453.6-2,268.0	14.2	127.0	12.7	12.7	235.0	69.9	101.6	158.8	1/2-13 UNC	127.0	95.3	69.9	101.6
4,535.9-11,339.8	19.8	199.9	19.1	19.1	304.8	152.4	203.2	190.5	3/4-10 UNC	203.2	152.4	152.4	203.2
22,679.7-34,019.5	19.8	234.9	25.4	25.4	412.8	165.1	228.6	292.1	1 1/4-7 UNC	304.8	241.3	165.1	228.6

Standard Features

- Capacities (per module): 1,000lb-75,000lb (453.6kg-34,019.5kg)
- Self-checking, easy-to-use design allows module to be bolted directly to tank leg without requiring additional mounting plates or load buttons
- Environmentally protected load cells
- Double-ended shear beam design, center loaded
- Painted mild steel construction

Optional Features

- Kits available with VPG® Sensortronics 65016 load cells, capacities (per module): 1,000lb-75,000lb (453.6kg-34,019.5kg)

Applications

- Medium- to heavy-capacity tanks, bins and hoppers
- Bulk material management

Complete Kit Includes

- One JB4SS NEMA Type 4X stainless steel signal trim junction box
- Three or four RL1600 mild steel compression mounts
- Three or four RL75016 double-ended shear beam load cells
- 25 ft of our hostile environment EL147HE SURVIVOR® load cell cable

Load Cell Certifications



Order Information

Load Rating (Per Module)		Part #	Price
Single Module (Does NOT Include Load Cell)			
1,000 lb-5,000 lb	453.6 kg-2,268.0 kg	17812	Consult
10,000-25,000 lb	4,535.9 kg-11,339.8 kg	17814	Consult
50,000 lb	22,679.6 kg	17816	Consult
75,000 lb	34,019.5 kg	25346	Consult
3-Module Kit			
1000 lb	453.6 kg	18117	Consult
1500 lb	680.4 kg	18118	Consult
2000 lb	907.2 kg	18119	Consult
2500 lb	1,134.0 kg	18120	Consult
3000 lb	1,360.8 kg	18121	Consult
5000 lb	2,268.0 kg	18122	Consult
10,000 lb	4,535.9 kg	18123	Consult
15,000 lb	6,803.9 kg	18124	Consult
20,000 lb	9,071.9 kg	18125	Consult
25,000 lb	11,339.8 kg	18126	Consult
50,000 lb	22,679.6 kg	18127	Consult
75,000 lb	34,019.5 kg	25348	Consult
4-Module Kit			
1,000 lb	453.6 kg	18129	Consult
1,500 lb	680.4 kg	18130	Consult
2,000 lb	907.2 kg	18131	Consult
2,500 lb	1,134.0 kg	18132	Consult
3,000 lb	1,360.8 kg	18133	Consult
5,000 lb	2,268.0 kg	18134	Consult
10,000 lb	4,535.9 kg	18135	Consult
15,000 lb	6,803.9 kg	18136	Consult
20,000 lb	9,071.9 kg	18137	Consult
25,000 lb	11,339.8 kg	18138	Consult
50,000 lb	22,679.6 kg	18139	Consult
75,000 lb	34,019.5 kg	25349	Consult

VPG SENSORTRONICS 65016 ORDER INFORMATION

Load Rating (Per Module)		Part #	Price
3-Module Kit			
1,000 lb	453.6 kg	18189	Consult
1,500 lb	680.4 kg	18190	Consult
2,500 lb	1,134.0 kg	18192	Consult
5,000 lb	2,268.0 kg	18194	Consult
10,000 lb	4,535.9 kg	18195	Consult
15,000 lb	6,803.9 kg	18196	Consult
20,000 lb	9,071.9 kg	18197	Consult
25,000 lb	11,339.8 kg	18198	Consult
50,000 lb	22,679.6 kg	18199	Consult
75,000 lb	34,019.5 kg	25350	Consult
4-Module Kit			
1,000 lb	453.6 kg	18201	Consult
1,500 lb	680.4 kg	18202	Consult
2,500 lb	1,134.0 kg	18204	Consult
5,000 lb	2,268.0 kg	18206	Consult
10,000 lb	4,535.9 kg	18207	Consult
15,000 lb	6,803.9 kg	18208	Consult
20,000 lb	9,071.9 kg	18209	Consult
25,000 lb	11,339.8 kg	18210	Consult
50,000 lb	22,679.6 kg	18211	Consult
75,000 lb	34,019.5 kg	25351	Consult
Dummy Load Cells			
1,000 lb-5,000 lb	453.6 kg-2,268.0 kg	18236	Consult
10,000 lb-25,000 lb	4,535.9 kg-11,339.8 kg	18237	Consult
50,000 lb	22,679.6 kg	18238	Consult

Shims, Mild Steel

	Part #	Price
1,000 lb-5,000 lb		
0.0625	150844	Consult
0.125	150845	Consult
0.250	150846	Consult
10,000 lb-25,000 lb		
0.0625	150847	Consult
0.125	150848	Consult
0.250	150849	Consult
50,000 lb-75,000 lb		
0.0625	150850	Consult
0.125	150851	Consult
0.250	150866	Consult

Load Cell Upgrade

RL75016SS Stainless Steel Load Cells	
Three mount kits, 1,000 lb to 25,000 lb	Consult list price
Four mount kits, 1,000 lb to 25,000 lb	Consult list price
RL75016WHE Stainless Steel Hermetic Load Cells	
Three mount kits 1,000 lb-5,000 lb	Consult, 10,000 lb-25,000 lb
Four mount kits 1,000 lb-5,000 lb	Consult, 10,000 lb-25,000 lb

Contact factory for a 50,000 lb to 75,000 lb adder for stainless only